

Install Windows XP using USB Flash Disk/ Flash Drive - Step by Step Guide

Someone in this post ([Acer Aspire One Specifications and Windows XP Drivers](#)) ask me to write a tutorial about how to install Windows XP using USB flash disk/flash drive. If you want to [install Windows XP](#), but your notebook (or PC) has no CDROM, you should install Windows XP using USB Flash disk/Flash Drive/Thumb drive... just follow this guide :



step 1:

Buy an USB Flash Drive (at least 2GB).

When you do this tutorial, please make sure your computer/laptop/PC has a CD-ROM (or DVD).

so, now you have 2 computers, with CD-ROM support and **without** CD-ROM support (e.g [Acer Aspire One](#), Asus EEE-PC).

step 2:

Download this software pack (Komku-SP-usb.exe - [Download](#)) 1.47MB

UPDATE 1 :

Anonymous said...

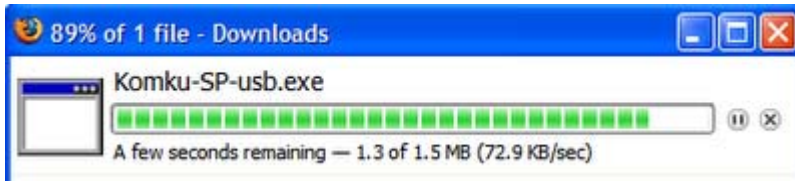
your download at mediafire keeps timing out, any other hosts available?

Mirror [Depositfiles](#)

Mirror [Rapidshare](#)

Mirror [Easy-Share](#)

Mirror [Megaupload](#)



this software pack contains 3 application :

- BootSect.exe (Boot Sector Manipulation Tool)
- PeToUSB (<http://GoCoding.Com>)
- usb_prep8 (Prepares Windows XP Setup LocalSource for Copy to USB-Drive)

step 3:

Double click **Komku-SP-usb.exe**



a window will appear... and click **Install**



step 4:

Insert your USB Flash Drive.

When I made this tutorial, I was using 4GB Transcend USB FlashDrive...



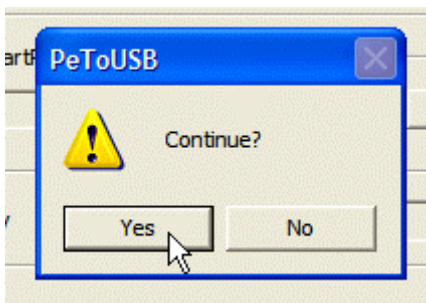
Locate folder **C:\Komku\PeToUSB**
double click **PeToUSB.exe**



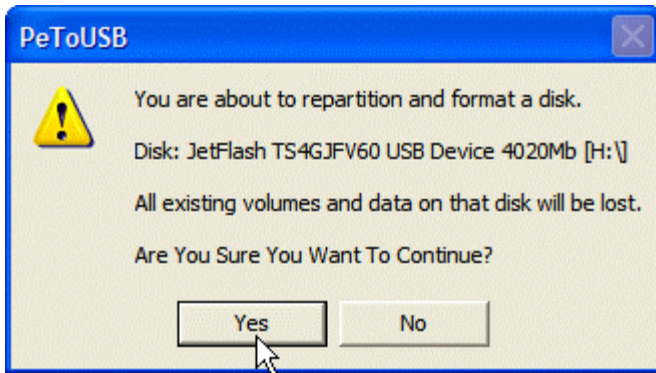
a window will appear like this...



Destination Drive : select **USB Removable**
check on **Enable Disk Format**
check on **Quick Format**
check on **Enable LBA (FAT 16x)**
Drive Label : **XP-KOMKU** (or whatever you want)
then click **Start**

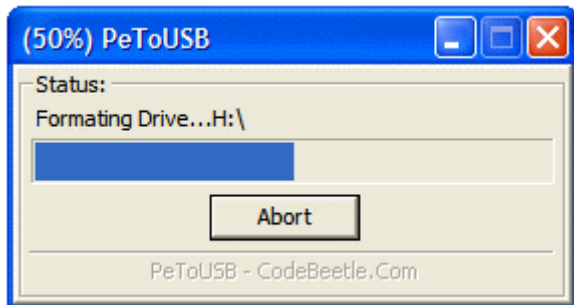


Click **Yes** to continue....

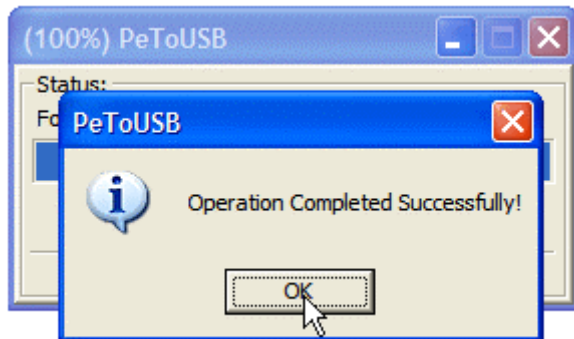


"You are about to repartition and format a disk. Disk: All existing volumes and data on that disk will be lost. Are You Sure You Want To Continue?"

click **Yes**



Wait a few seconds...

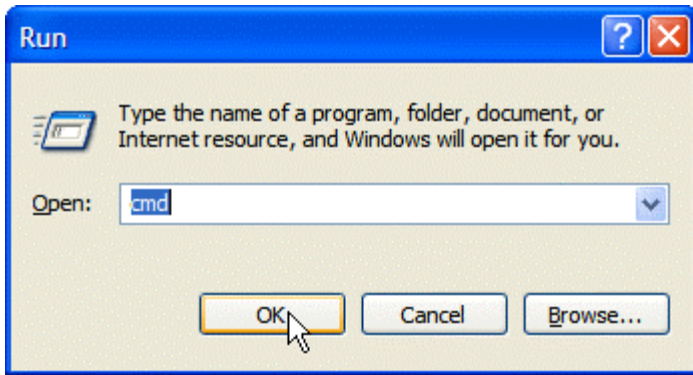


Click **OK**, and you can close PeToUSB window.

step 5:

Open Command Prompt ...

Click Start > Run > type **cmd** > click **OK**



On Command Prompt window, go to directory **C:\Komku\bootsect**
how to do this?
first type this **cd** and press Enter

```
C:\ C:\WINDOWS\system32\cmd.exe
Microsoft Windows XP [Version 5.1.2600]
(C) Copyright 1985-2001 Microsoft Corp.
C:\Documents and Settings\Cahya>cd\
```

then type **cd komku\bootsect** and press Enter

```
C:\ C:\WINDOWS\system32\cmd.exe
Microsoft Windows XP [Version 5.1.2600]
(C) Copyright 1985-2001 Microsoft Corp.
C:\Documents and Settings\Cahya>cd\
C:\>cd komku\bootsect
```

the result...

```
C:\ C:\WINDOWS\system32\cmd.exe
Microsoft Windows XP [Version 5.1.2600]
(C) Copyright 1985-2001 Microsoft Corp.
C:\Documents and Settings\Cahya>cd\
C:\>cd komku\bootsect
C:\Komku\bootsect>
```

Don't close Command Prompt window, and go to step 6...

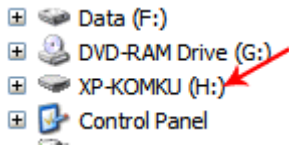
step 6:

on command prompt window, type **bootsect /nt52 H:**

```
C:\WINDOWS\system32\cmd.exe
Microsoft Windows XP [Version 5.1.2600]
(C) Copyright 1985-2001 Microsoft Corp.

C:\Documents and Settings\Cahya>cd\
C:\>cd komku\bootsect
C:\Komku\bootsect>bootsect /nt52 H:_
```

H: is drive letter for my USB Flash Drive, it may be different with yours...



and press Enter

the result... *"Successfully updated filesystem bootcode. Bootcode was successfully updated on all targeted volumes."*

```
C:\WINDOWS\system32\cmd.exe
Microsoft Windows XP [Version 5.1.2600]
(C) Copyright 1985-2001 Microsoft Corp.

C:\Documents and Settings\Cahya>cd\
C:\>cd konku\bootsect
C:\Konku\bootsect>bootsect /nt52 H:
Target volumes will be updated with NTLDR compatible bootcode.
H: (\?\Volume{a2c392e6-93bc-11dd-9d77-0016d35b9572}\)
    Successfully updated FAT filesystem bootcode.
Bootcode was successfully updated on all targeted volumes.
C:\Konku\bootsect>
```

don't close Command Prompt window, and go to step 7...

step 7:

now type this **cd..** and press Enter

```
C:\WINDOWS\system32\cmd.exe
Microsoft Windows XP [Version 5.1.2600]
(C) Copyright 1985-2001 Microsoft Corp.
C:\Documents and Settings\Cahya>cd\
C:\>cd konku\bootsect
C:\Konku\bootsect>bootsect /nt52 H:
Target volumes will be updated with NTLDR compatible bootcode.
H: (\?\Volume{a2c392e6-93bc-11dd-9d77-0016d35b9572}\)
    Successfully updated FAT filesystem bootcode.
Bootcode was successfully updated on all targeted volumes.
C:\Konku\bootsect>cd..
```

then type `cd usb_prep8` and press Enter

```
C:\WINDOWS\system32\cmd.exe
Microsoft Windows XP [Version 5.1.2600]
(C) Copyright 1985-2001 Microsoft Corp.
C:\Documents and Settings\Cahya>cd\
C:\>cd konku\bootsect
C:\Konku\bootsect>bootsect /nt52 H:
Target volumes will be updated with NTLDR compatible bootcode.
H: (\?\Volume{a2c392e6-93bc-11dd-9d77-0016d35b9572}\)
    Successfully updated FAT filesystem bootcode.
Bootcode was successfully updated on all targeted volumes.
C:\Konku\bootsect>cd..
C:\Konku>cd usb_prep8
```

type `usb_prep8` again... and press Enter

```
C:\WINDOWS\system32\cmd.exe
Microsoft Windows XP [Version 5.1.2600]
(C) Copyright 1985-2001 Microsoft Corp.
C:\Documents and Settings\Cahya>cd\
C:\>cd konku\bootsect
C:\Konku\bootsect>bootsect /nt52 H:
Target volumes will be updated with NTLDR compatible bootcode.
H: (\?\Volume{a2c392e6-93bc-11dd-9d77-0016d35b9572}\)
    Successfully updated FAT filesystem bootcode.
Bootcode was successfully updated on all targeted volumes.
C:\Konku\bootsect>cd..
C:\Konku>cd usb_prep8
C:\Konku\usb_prep8>usb_prep8
```

step 8:

Your command prompt window will look like this


```
C:\WINDOWS\system32\cmd.exe - usb_prep8
Program - usb_prep8.csd - 01 dec 2007 - Date - Tue 11/04/2008 18:46:35
Prepares Windows XP Setup LocalSource for Copy to USB-Drive

*** BEFORE YOU START: *** Use 2 GB USB-stick with High Read/Write Speed
First Format to Make Bootable USB-stick with FAT FileSystem, FAT = Faster
such that USB-stick has MBR Bootsector and is seen by BIOS as Harddisk

Use PeToUSB.exe with Settings: Enable Disk Format with LBA FAT16X
OR Use Existing USB-stick with MBR Bootsector and Multi BOOT.INI Menu
GUIDE: http://www.911cd.net/forums//index.php?shoutopic=20089

For AUTOSTART: COPY PeToUSB.exe in your usb_prep folder
http://gocoding.com/page.php?al=petousb

For UNATTENDED Install make Changes in usb_prep folder:
Change Product Key in winnt.sif and Change $OEM$ folder to your needs

FOR USB-Harddisk make 1900 MB partition at beginning of the USB-Harddisk
Use FAT Format and Set Active OR use PeToUSB to Format such partition
rdummy.sys makes Fixed USB-Harddisk seen in XP Setup as Removable Device

Press any key to continue . . .
```

Press any key to continue...
usb_prep8 welcome screen will appear

```
C:\WINDOWS\system32\cmd.exe - usb_prep8
Program - usb_prep8.csd - 01 dec 2007 - Date - Tue 11/04/2008 11:02:46
Prepares Windows XP LocalSource for Copy to USB-Drive:

0) Change Type of USB-Drive, currently [USB-stick]
1) Change XP Setup Source Path, currently []
2) Change Virtual TempDrive, currently [T:]
3) Change Target USB-Drive Letter, currently []
4) Make New Tempimage with XP LocalSource and Copy to USB-Drive
5) Use Existing Tempimage with XP LocalSource and Copy to USB-Drive
F) Change Log File - Simple OR Extended, currently [Simple]
Q) Quit

Enter your choice: _
```

Prepares Windows XP LocalSource for Copy to USB-Drive:

- 0) Change Type of USB-Drive, currently [USB-stick]*
- 1) Change XP Setup Source Path, currently []*
- 2) Change Virtual TempDrive, currently [T:]*
- 3) Change Target USB-Drive Letter, currently []*
- 4) Make New Tempimage with XP LocalSource and Copy to USB-Drive*
- 5) Use Existing Tempimage with XP LocalSource and Copy to USB-Drive*
- F) Change Log File - Simple OR Extended, currently [Simple]*
- Q) Quit*

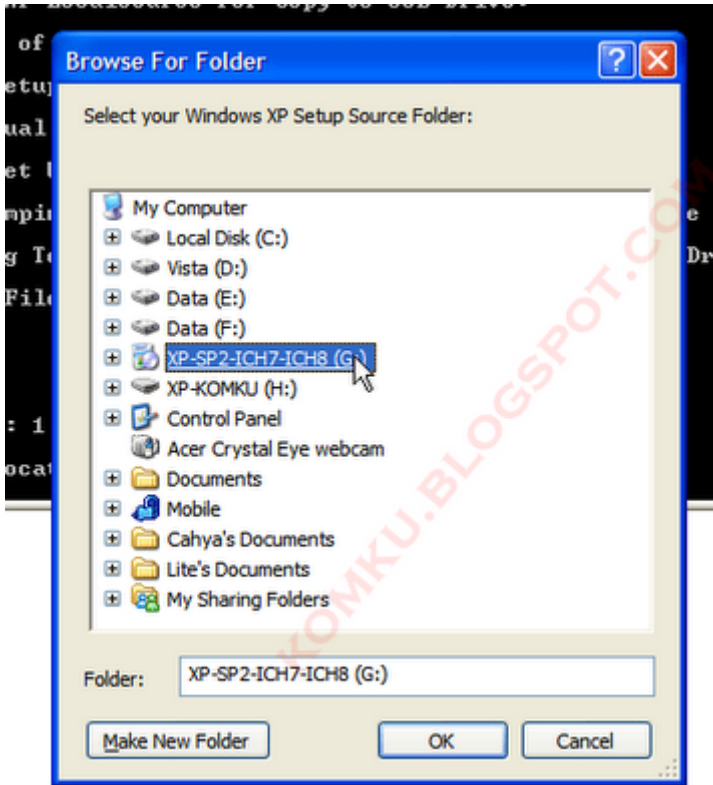
Enter your choice: _

now, insert your original Windows XP CD, or [Windows XP with sata ahci driver](#) to your CD/DVD ROM

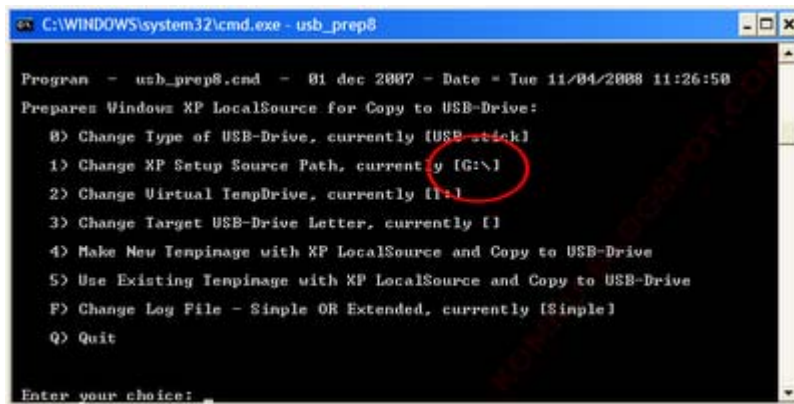
and back to Command Prompt window

type **1** then press Enter...

"Browse For Folder" window will appear, select your CD/DVD drive and click **OK**



the result... "XP Setup Source Path" changed to **G:** (yours may be different)



now for point 2, if letter **T** is currently assigned to a drive in your computer, you must change it.... if not, leave it as it is
how to change it?

type **2** and press Enter...

```
Give Non existing DriveLetter e.g type I as Virtual Drive for Tempinage
Enter Available Virtual DriveLetter: _
```

"Enter Available Virtual DriveLetter"

for example you doesn't have drive S
so you type S and press Enter

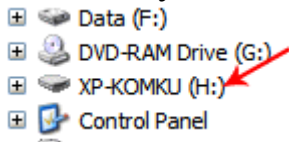
back to usb_prep8 welcome screen...
now type **3** and press Enter...

```
Please give Target USB-Drive Letter e.g type U
Enter Target USB-Drive Letter:
```

"Please give Target USB-Drive Letter

e.g type U" Enter Target USB-Drive Letter:

because my Flash drive letter is **H**

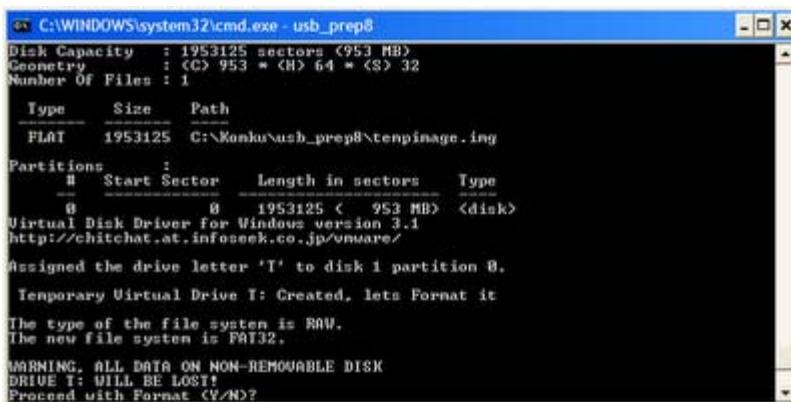


so, type **H** and press Enter...

after back to usb_prep8 welcome screen...

now type **4** and press Enter to make new temporary image with XP LocalSource and copy it to USB Flash Drive

please wait a few seconds..



"WARNING, ALL DATA ON NON-REMOVABLE DISK DRIVE T: WILL BE LOST!

Proceed with Format (Y/N)?"

type **Y** and press Enter

please wait....

when format virtual disk complete, press any key to continue...

```
C:\WINDOWS\system32\cmd.exe - usb_prep8
The type of the file system is RAW.
The new file system is FAT32.

WARNING, ALL DATA ON NON-REMOVABLE DISK
DRIVE T: WILL BE LOST!
Proceed with Format (Y/N)? Y
QuickFormatting 953M
Initializing the File Allocation Table (FAT)...
Format complete.

  998,831,368 bytes total disk space.
  998,827,264 bytes available on disk.

    4,896 bytes in each allocation unit.
  243,659 allocation units available on disk.

    32 bits in each FAT entry.

Volume Serial Number is 741C-1EE8

Format of TEMPDRIVE T: is FAT32 and Completed

Creating LocalSource on Temporary Drive, may take a while ( a few minutes )

Press any key to continue . . .
```

please wait... making of LocalSource folder is in progress...

```
C:\WINDOWS\system32\cmd.exe - usb_prep8
G:\1386\C_437.NL_
1 File(s) copied
G:\1386\UGROEM.PO_
1 File(s) copied
G:\1386\L_INTL.NL_
1 File(s) copied
G:\1386\HASTOR.SY_
1 File(s) copied
1 file(s) copied.
G:\1386\CPQARRAV.SV_
1 File(s) copied
G:\1386\AH0154X.SV_
1 File(s) copied
G:\1386\SPARRAV.SV_
1 File(s) copied
G:\1386\ATAPI.SV_
1 File(s) copied
G:\1386\SYMCS10.SV_
1 File(s) copied
G:\1386\AIC78XX.SV_
1 File(s) copied
G:\1386\DAC960NT.SV_
1 File(s) copied
G:\1386\QL100NT.SV_
```

when "Making of LocalSource folder \$WIN_NT\$.~LS Ready"
Press any key to continue...

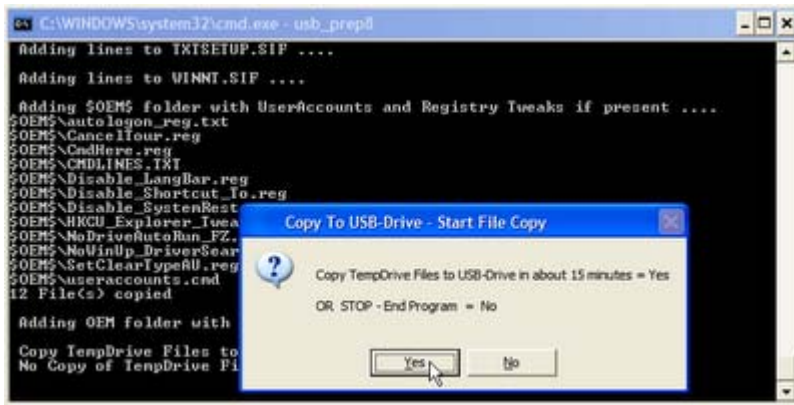
```
C:\WINDOWS\system32\cmd.exe - usb_prep8
G:\components\TABLETPC\1386\tipcapps.dl_
G:\components\TABLETPC\1386\tipincol.dl_
G:\components\TABLETPC\1386\tiplib.dl_
G:\components\TABLETPC\1386\tipres.dl_
G:\components\TABLETPC\1386\tipskins.dl_
G:\components\TABLETPC\1386\tiptaf.dl_
G:\components\TABLETPC\1386\tiptute.ht_
G:\components\TABLETPC\1386\tpc_oobe.dl_
G:\components\TABLETPC\1386\tpc_oobe.zn_
G:\components\TABLETPC\1386\tpcpinot.dl_
G:\components\TABLETPC\1386\trkbc.dl_
G:\components\TABLETPC\1386\tutaicod.gi_
G:\components\TABLETPC\1386\tutaicol.gi_
G:\components\TABLETPC\1386\viewer.ht_
G:\components\TABLETPC\1386\viewer.xn_
G:\components\TABLETPC\1386\wchpad.in_
G:\components\TABLETPC\1386\wisptis.ex_
G:\components\TABLETPC\1386\zh-chakk.dl_
G:\components\TABLETPC\1386\zh-chtkb.dl_
G:\components\netFx\1386\netFx.cab
89 File(s) copied

Making of LocalSource folder $WIN_NT$.~LS Ready

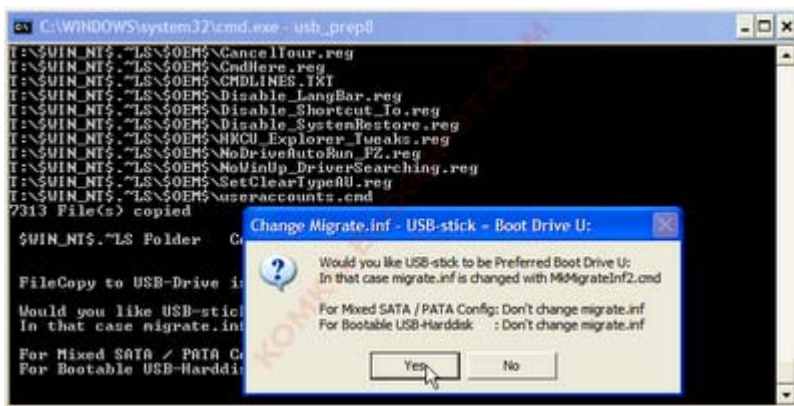
Press any key to continue . . .
```

"Copy TempDrive Files to USB-Drive in about 15 minutes = Yes OR STOP = End Program = No"

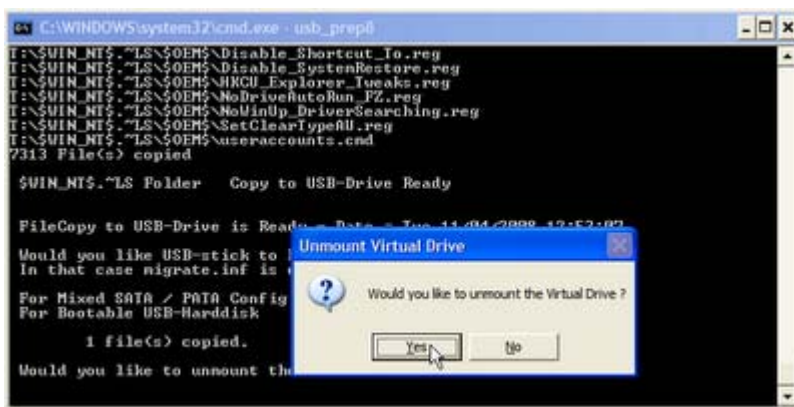
Click Yes, and wait...



"Would you like USB-stick to be preferred Boot Drive U: bla... bla..."
 Click Yes



"Would you like to unmount the Virtual Drive ?"
 Click Yes, wait a few seconds, and press any key....
 press any key again to close usb_prep8...



Now, your USB Flash Drive is ready...



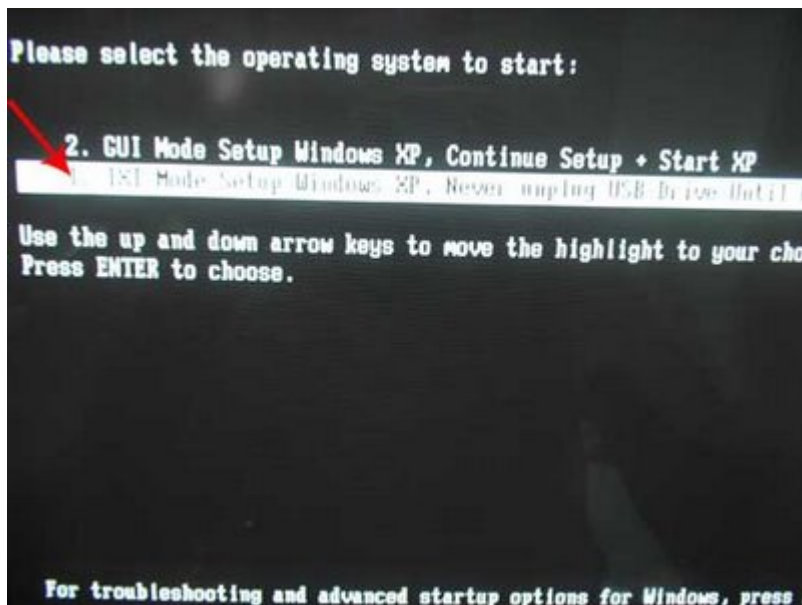
step 9:

Now, insert your USB Flash Drive/Flash Disk/Thumb Drive to your notebook (e.g [Acer Aspire One](#))

go to BIOS and make **USB HDD** (or **USB ZIP** in some other machine) as primary boot device....

then boot from your USB Flash Drive....

and select *"TXT Mode Setup Windows XP, Never unplug USB-Drive Until After Logon"*

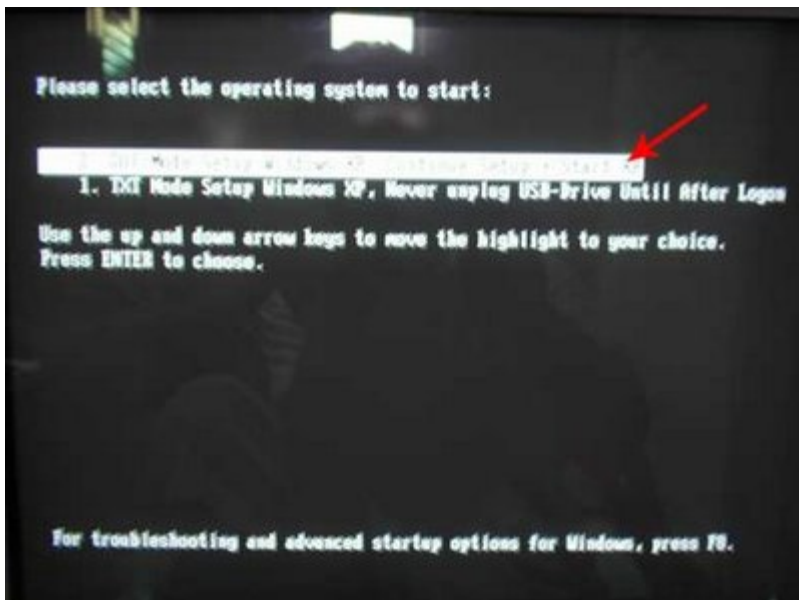


After Hard Disk detected, delete all partition, create single partition... and [install Windows XP](#) on that partition...

and wait...



once text mode setup is complete, computer will restart....
this time select "*GUI Mode setup Windows XP, Continue Setup + Start XP*"



Continue Windows XP setup.... and Done!
Windows XP Installed....





Remember, you can use this tutorial to install Windows XP on all other computers.. not just Aspire One and Asus EEE-PC....



good luck!